

RESOLUTION NO. 03-77

RESOLUTION CREATING RURAL SPECIAL IMPROVEMENT MAINTENANCE
DISTRICT TO BE KNOWN AS R.S.I.D. #705M
HARVEY SUBDIVISION AMENDED

WHEREAS, the Board of County Commissioners of Yellowstone County, Montana, met in regular session and executed a Resolution of Intent to Create a Rural Special Improvement Maintenance District #705M for Harvey Subdivision Amended, as described in Exhibit A and more particularly shown in Exhibit B (map) and,

WHEREAS, the Clerk and Recorder published the Notice of the passage of Resolution of Intent to Create the District in the Billings Gazette on July 25th and August 1st, 2003, and mailed a copy of the Notice to every person, firm or corporation owning property in the District; and,

WHEREAS, the Board of County Commissioners finds, determines and declares that:

1. The public interest or convenience requires the creation of a Rural Special Improvement Maintenance District as hereinafter described;
2. The costs of providing maintenance shall be borne by owners of the property included within the boundaries of the Rural Special Improvement Maintenance District with all existing and future lots being assessed an equal amount on a per lot basis;
3. The purpose of forming the District is to provide the maintenance, preservation, and repair of the streets located within the boundaries of this District;
4. The Commissioners have been presented with a valid Petition to create the proposed District;

NOW, THEREFORE, BE IT RESOLVED by the Board of County Commissioners of Yellowstone County as follows:

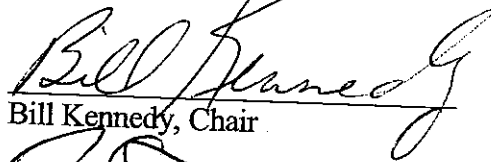
1. The Commissioners have acquired jurisdiction to create a Rural Special Maintenance District No. 705M to provide for the annual maintenance, preservation and repair of the streets. The costs are more particularly described in Exhibit D. The estimated costs shown do not preclude other eligible street maintenance expenditures.
2. All of the costs of the District shall be assessed equally on a per lot basis for all existing and future lots. (See Exhibit C.) The boundaries of this District are shown on the map attached as Exhibit B and described in Exhibit A.
3. The number of the Rural Special Maintenance District thereof shall be No. 705M.

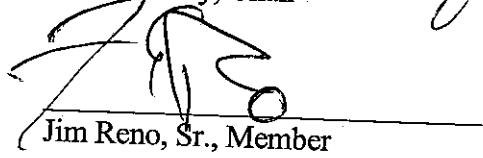
4. All lots accessing their property from the streets will benefit from proposed R.S.I.D. and shall be assessed for road maintenance. All lots will be assessed an equal amount based upon the total cost of the maintenance.

PASSED AND ADOPTED by the Board of County Commissioners of Yellowstone County, Montana, this 5th day of August, 2003.

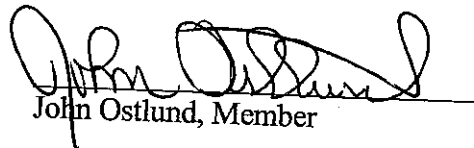
Board of County Commissioners
Yellowstone County, Montana

(SEAL)


Bill Kennedy, Chair


Jim Reno, Sr., Member

ATTEST:


John Ostlund, Member

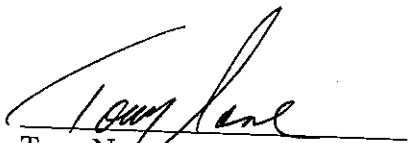

Tony Nave
Clerk and Recorder

EXHIBIT A

RESOLUTION OF INTENTION TO CREATE R.S.I.D. #705M (HARVEY SUBDIVISION AMENDED)

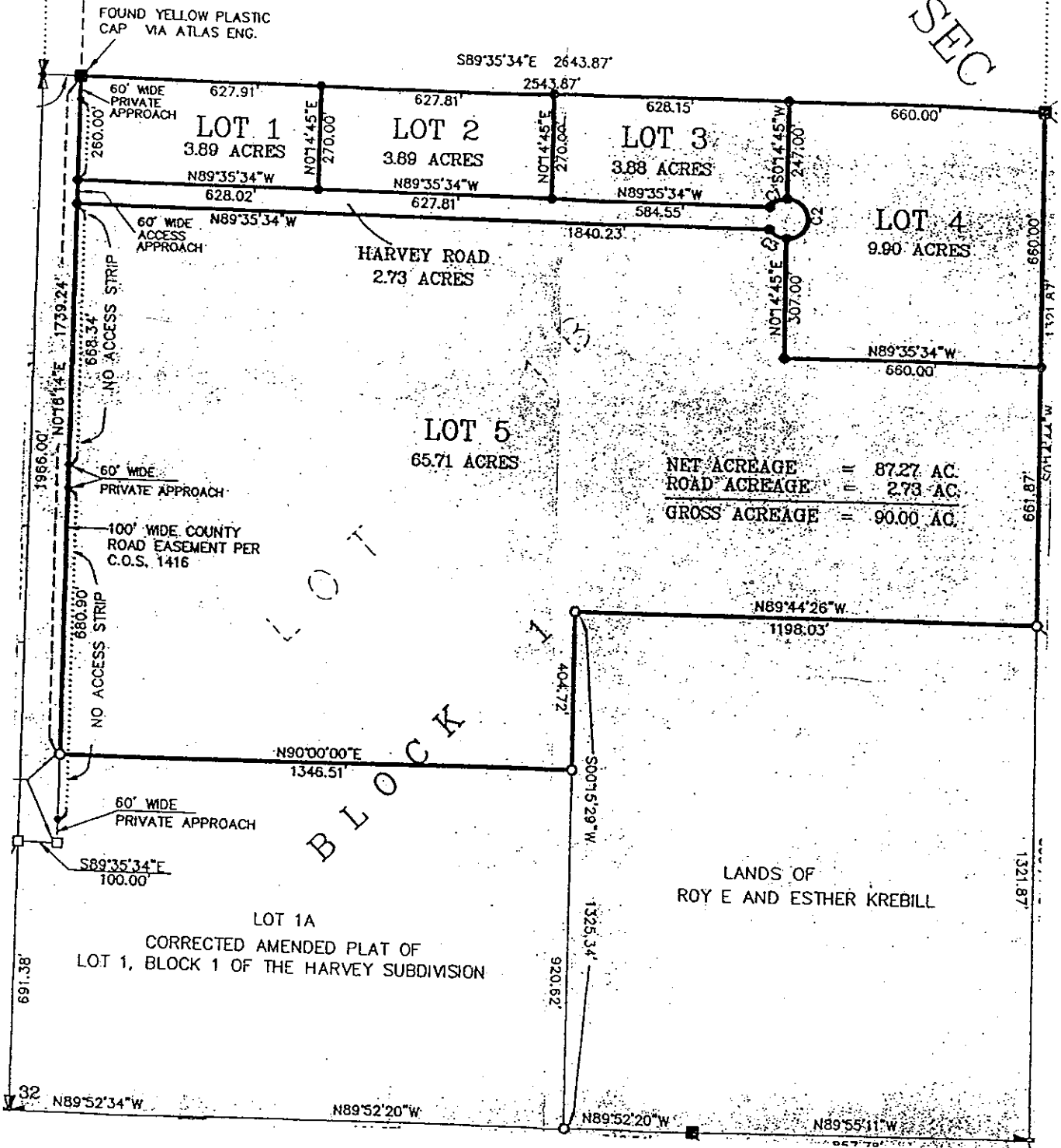
LEGAL DESCRIPTIONS

Lots 1 through 5 of amended plat of lot 1B block 1 of corrected amended plat of
Harvey Subdivision

Exhibit B

LANDS OF
STATE OF MONTANA

SEC



FOUND YELLOW PLASTIC CAP VIA ATLAS ENG.

S89°35'34"E 2643.87'

2543.87'

60' WIDE PRIVATE APPROACH

627.91'

N07°4'45"E 270.00'

627.81'

LOT 1
3.89 ACRES

LOT 2
3.89 ACRES

LOT 3
3.88 ACRES

660.00'

260.00'

N89°35'34"W

N89°35'34"W

N89°35'34"W

628.15'

N07°4'45"W 277.00'

LOT 4
9.90 ACRES

60' WIDE ACCESS APPROACH

N89°35'34"W

HARVEY ROAD
2.73 ACRES

1840.23'

N89°35'34"W
660.00'

NO ACCESS STRIP
668.34'

1739.24'

N07°16'14"E

60' WIDE PRIVATE APPROACH

100' WIDE COUNTY ROAD EASEMENT PER C.O.S. 1416

LOT 5
65.71 ACRES

NET ACREAGE	=	87.27 AC.
ROAD ACREAGE	=	2.73 AC.
GROSS ACREAGE	=	90.00 AC.

NO ACCESS STRIP
880.90'

60' WIDE PRIVATE APPROACH

N90°00'00"E
1346.51'

BLOCK 1

N89°44'26"W
1198.03'

LOT 1A
CORRECTED AMENDED PLAT OF
LOT 1, BLOCK 1 OF THE HARVEY SUBDIVISION

LANDS OF
ROY E AND ESTHER KREBILL

691.38'

404.72'

S00°15'28"W

1326.34'

920.62'

32

N89°52'34"W

N89°52'20"W

N89°52'20"W

N89°55'11"W

1321.87'

Exhibit D

PETITION TO ESTABLISH A RURAL SPECIAL IMPROVEMENT DISTRICT (RSID)

SECTION C
ESTIMATED ANNUAL MAINTENANCE COST

FALL MAINTENANCE:

ACTIVITY/IMPROVEMENT	ESTIMATED COST
	\$
	\$

WINTER MAINTENANCE:

ACTIVITY/IMPROVEMENT	ESTIMATED COST
	\$
	\$

SPRING MAINTENANCE:

ACTIVITY/IMPROVEMENT	ESTIMATED COST
BLADE ROAD	\$ 250 ⁰⁰
	\$

SUMMER MAINTENANCE:

ACTIVITY/IMPROVEMENT	ESTIMATED COST
	\$
	\$

TOTAL ESTIMATED ANNUAL MAINTENANCE COST: 250⁰⁰